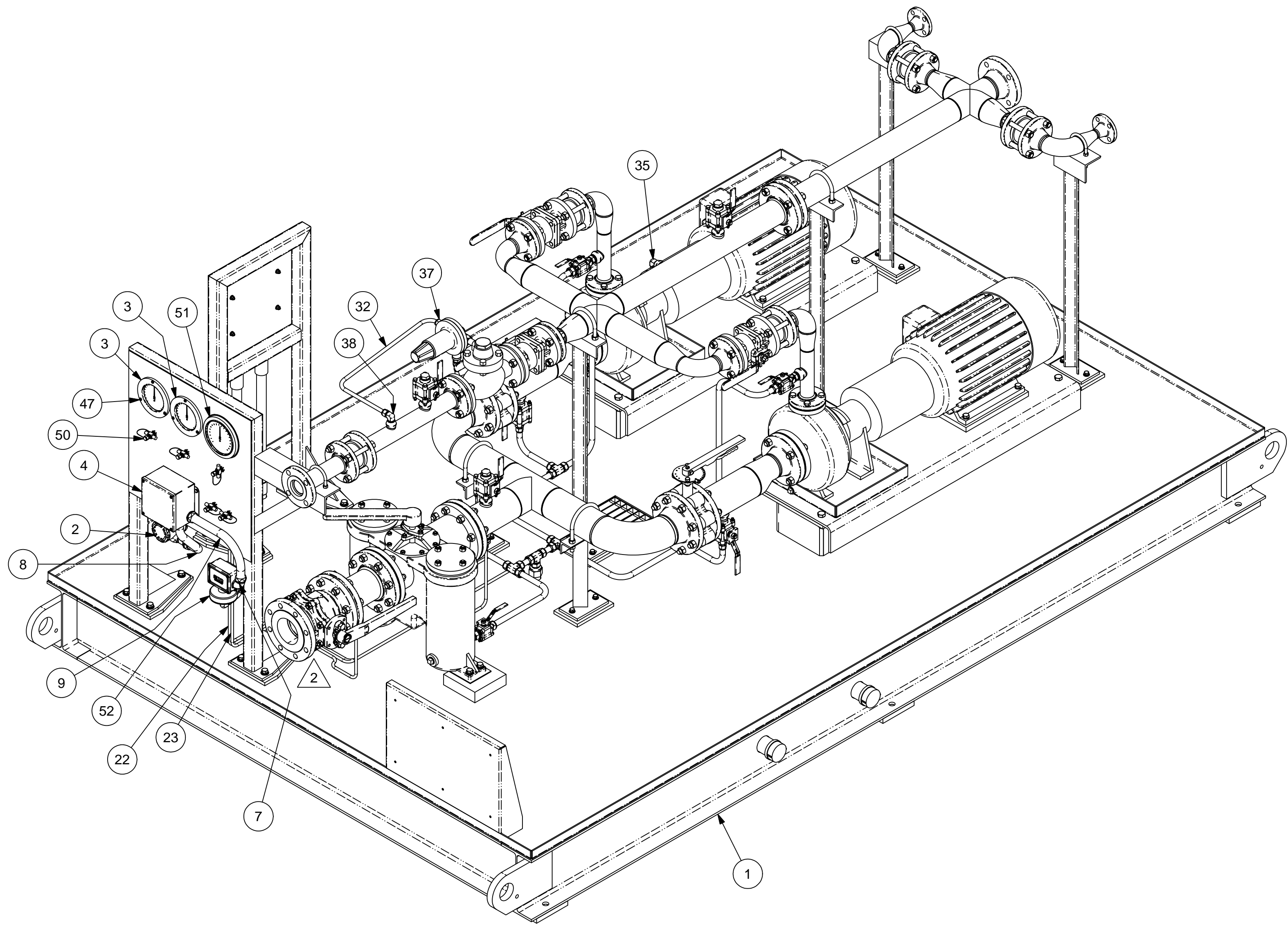


D

C

B

A



NOTES:  
1. CHECK PUMP CONNECTIONS FOR RESIDUAL STRESS



2	CHG INLET BVF TO BV	S. Boerckel	2/25/2011	T. KOONTZ	B. MADDUX
1	CHG DISC PIPE 4" TO 3"	S. Boerckel	2/15/2011	T. KOONTZ	B. MADDUX
0	ISSUED FOR FABRICATION	S. Boerckel	1/26/2011	T. KOONTZ	B. MADDUX
REV	DESCRIPTION	AUTHOR	DATE	CHECKED B	QA/QC
REVISION HISTORY					

52	1	52NN-K117-M1-B2A-TT	PRESSURE & VACUUM SWITCH (40-0-40 IN WC)	SOR PRESSURE & VACUUM SWITCH				
51	1	120x4112	4-1/2" MODEL-120 FILTER MINDER GAUGE	MID-WEST INSTRUMENT FILTER MINDER GAUGE				
50	5	0153V3	1/4"FNPT GAGE VALVE w/STEM TEST CONN	DRAGON GAGE VALVE w/ STEM TEST				
49	2		1/4-20 x 1 in LONG HHCS	HEX BOLT CAD PLATED - GRADE-5			1.00 in	
48	10		1/4-20 x 3/4 in LONG HHCS	HEX BOLT CAD PLATED - GRADE-5			0.75 in	
47	6		10-24 x 1 in PHILLIPS PAN HEAD SCREW	10-24 UNC - Steel, High Strength Low Alloy			1.00 in	
46	10		HEX NUT	1/4-20 - HEX NUT CAD PLATED - GRADE-5				
45	6	4319-0832-00N	10-24 HEX KEPS NUT	KEPS HEX NUT				
44	4	4319-0832-00N	8-32 HEX KEPS NUT	KEPS HEX NUT				
43	12		HELICAL SPRING LOCK WASHER	1/4" - HELICOID SPRING LOCK WASHER - CAD				
42	14		Type A Plain Washer	1/4" - TYPE-A PLAIN FLAT WASHER - CAD				
41	6		Type A Plain Washer	#10 - TYPE-A PLAIN FLAT WASHER - CAD				
40	4		Type A Plain Washer	#8 - TYPE-A PLAIN FLAT WASHER - CAD				
39	4	SS-600-2-4	3/8"OD x 1/4" NPT ELBOW	SWAGelok MALE 90Deg ELBOW				
38	1	SS-810-2-8	1/2"OD x 1/2"NPT ELBOW	SWAGelok 90Deg ELBOW STAINLESS				
37	1	SS-810-1-8	1/2"OD x 1/2"MNPT FITTING	SWAGelok STRAIGHT FITTING STAINLESS				
36	5	SS-600-3	3/8" TEE - TUBE	SAWGELOK 3/8" TEE - TUBE				
35	2	SS-600-2-8	3/8"OD x 1/2"NPT 90Deg ELBOW	SWAGelok MALE 90Deg ELBOW NPT				
34	3	SS-600-1-8RS	3/8TUBE x 1/2MNPT FITTING	SWAGelok STRAIGHT FITTING				
33	10	SS-600-1-4RS	3/8TUBE x 1/4MNPT STRAIGHT FITTING	SWAGelok STRAIGHT MNPT FITTING				
32	1		BACK PRESSURE TUBE	1/2" OD TUBE - SS			28.91 in	
31	1		PRESSURE SWITCH LOW TUBE	3/8" OD TUBE - SS			25.47 in	
30	2		PRESSURE DIFF TUBE	3/8" OD TUBE - SS			10.84 in	
29	4		PRESSURE DIFF TUBE	3/8" OD TUBE - SS			1.75 in	
28	2		LOW PRESSURE GAUGE TUBE	3/8" OD TUBE - SS			2.82 in	
27	1		LOW PRESSURE GAUGE TUBE	3/8"OD TUBE - SS			21.84 in	
26	2		LOWE PRESSURE GAUGE TUBE	3/8" OD TUBE - SS			14.24 in	
25	1		PRESSURE DIFF TUBE	3/8" OD TUBE - SS			6.98 in	
24	1		PT TUBE	3/8" OD TUBE - SS			6.98 in	
23	1		PRESSURE DIFF TUBE	3/8" OD TUBE - SS			56.26 in	
22	1		PRESSURE DIFF TUBE	3/8" OD TUBE - SS			75.04 in	
21	1		PT TUBING	3/8" OD TUBE - SS			156.55 in	
20	1		1/2" Hex Head Plug	NPT HEX PLUG				
19	2		1/4" Hex Head Plug	NPT HEX PLUG				
18	1		3/4F x 1/2M REDUCING SOCKET	NPT MALE & FEMALE REDUCING SOCKET				
17	2	EYA100	1" EYA SEALING FITTING	1" NPT EYA SEALING FITTING				
16	2		1" STRAIGHT HUB CONNECTOR	STRAIGHT HUB CONNECTOR				
15	4		CONDUIT COUPLING	1 - CONDUIT COUPLING				
14	2		MOTOR CONDUIT	1 GALV RIDGED CONDUIT			20.00 in	
13	2		MOTOR CONDUIT	1 GALV RIDGED CONDUIT			5.88 in	
12	2	5354SST	1" LIQUID TIGHT 90Deg ELBOW	LIQUID TIGHT ELBOW				
11	2		1" LIQUID TIGHT STRAIGHT CONNECTOR	LIQUID TIGHT STRAIGHT CONNECTOR				
10	2		MOTOR LIQUID TIGHT	1" LIQUID TIGHT			22.53 in	
9	1		LIQUID TIGHT	3/4" LIQUID TIGHT			13.78 in	
8	1		LIQUID TIGHT	3/4" LIQUID TIGHT			12.09 in	
7	1		3/4" LIQUID TIGHT 90Deg ELBOW	LIQUID TIGHT ELBOW				
6	3		3/4" LIQUID TIGHT STARIGHT CONNECTOR	LIQUID TIGHT STRAIGHT CONNECTOR				
5	1		J-BOX	8x8x4 STAINLESS JUNCTION BOX				
4	1		J-BOX	6x6x4 STAINLESS JUNCTION BOX				
3	2	7112	4-1/2" PANEL MOUNT GRADE-2A	DWYER SERIES 7000 PRESSURE GUAGE				
2	1	3051TG2A2A21AB4C6	3051 PRESSURE TRANSMITTER	ROSEMOUNT PRESSURE TRANSMITTER				
1	1	409-2956-LFF7EA-700	MECHANICAL	ASSEMBLY				
ITEM	QTY	PART NUMBER	DETAIL	DESCRIPTION	MATERIAL	Thickness	Width	Length

© COPYRIGHT, 2009, PRO STEEL  
MANUFACTURING ALL RIGHTS RESERVED.  
THIS DRAWING IS THE PROPRIETARY  
AND/OR CONFIDENTIAL PROPERTY OF  
PRO STEEL MANUFACTURING AND IS  
LOANED IN STRICT CONFIDENCE WITH  
THE UNDERSTANDING THAT IT  
WILL NOT BE REPRODUCED NOR USED  
FOR ANY PURPOSE EXCEPT THAT FOR WHICH  
IT IS LOANED. IT SHALL BE IMMEDIATELY  
RETURNED ON DEMAND, AND IS SUBJECT TO  
ALL OTHER TERMS AND CONDITIONS OF ANY  
WRITTEN AGREEMENT OR PURCHASE ORDER WHICH  
INCORPORATES OR RELATES TO THIS DRAWING.

UNLESS OTHERWISE SPECIFIED  
DIMENSIONS ARE IN INCHES  
TOLERANCES ON  
DECIMALS  
X.X ± 0.10  
X.XX ± 0.06  
X.XXX ± 0.03  
HOLE DIA ± 0.03  
ANGLES ± 0.50°  
SURFACE HFS-SF  
SQUARENESS ± 0.06  
DO NOT SCALE DRAWING

DRAWN S. Boerckel 1/26/2011  
CHECKED T. KOONTZ 2/3/2011  
QA B. MADDUX 2/3/2011  
REVIEWER  
PROJECT NO 409-2956-1  
CUSTOMER EDC - MARGARITA ISLAND  
JOB NO

TITLE  
CONTROLS, INSTRUMENTAION & ELECTRICAL  
ARRANGEMENT  
LIQUID FUEL FORWARDING SKID - 7EA  
SIZE D ML: DWG NO 409-2956-LFF7EA-0000-1 REV 2  
SCALE: NONE WEIGHT: 6179 lbmass SHEET 1



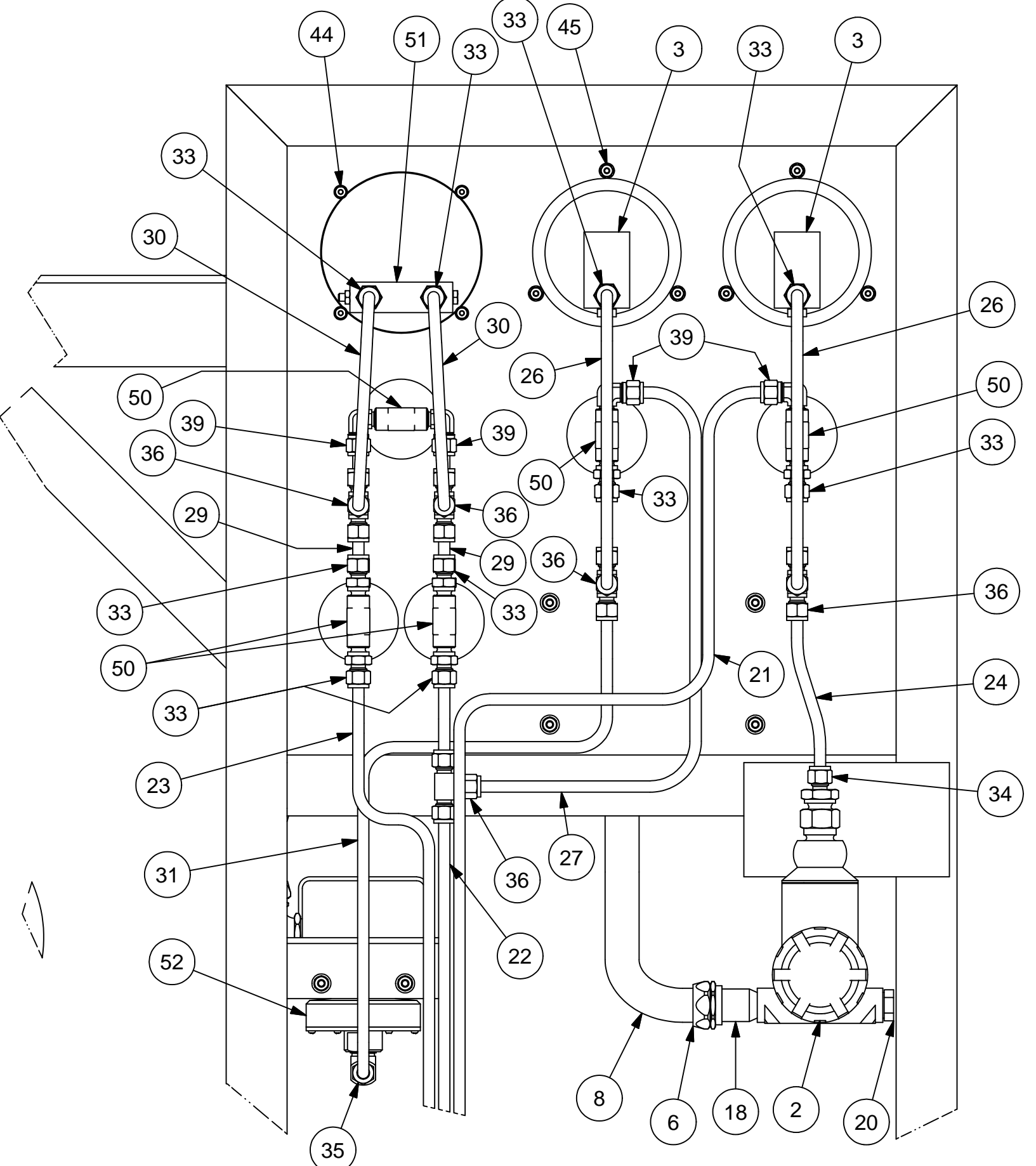
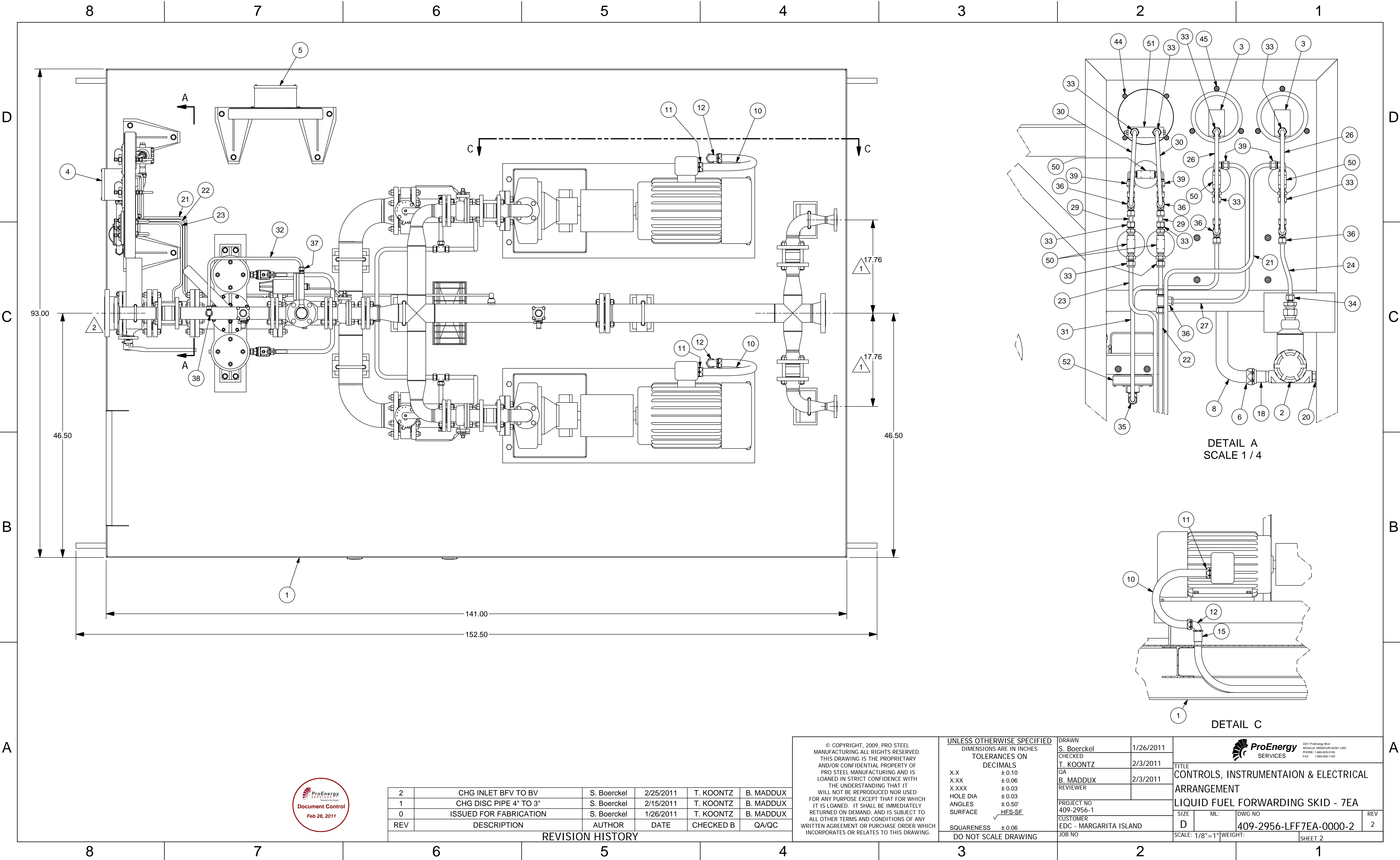
D

C

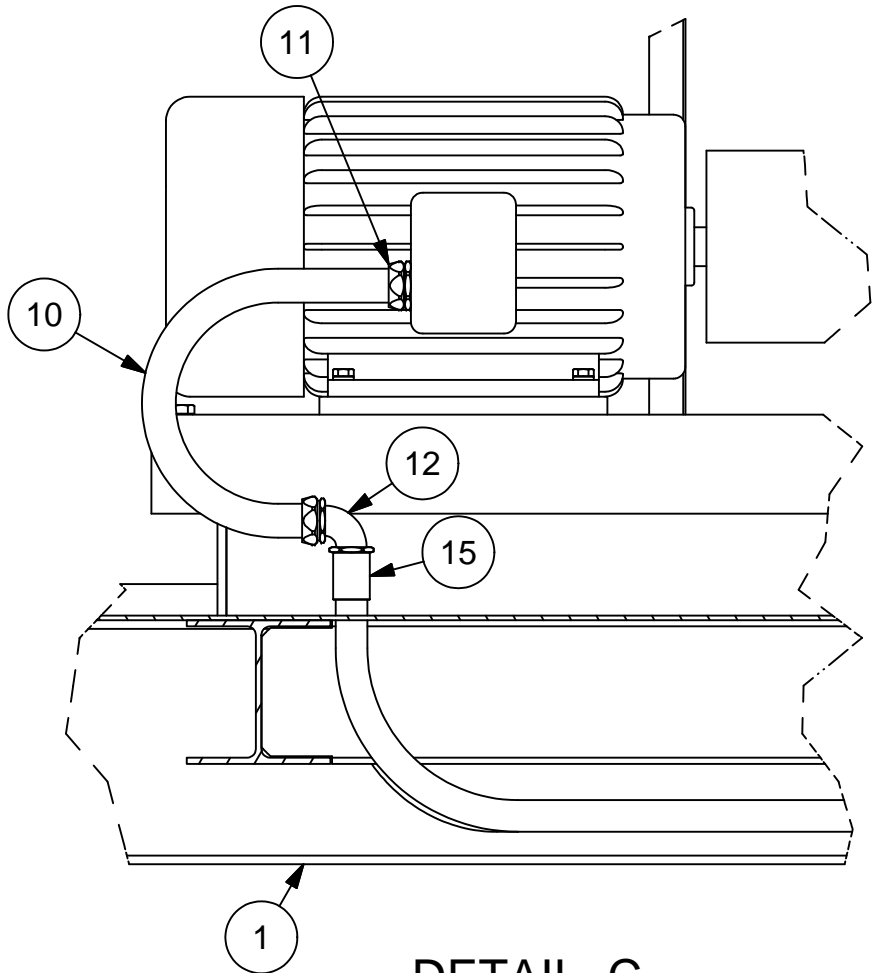
B

A





DETAIL A  
SCALE 1 / 4



DETAIL C



2	CHG INLET BVF TO BV	S. Boerckel	2/25/2011	T. KOONTZ	B. MADDUX
1	CHG DISC PIPE 4" TO 3"	S. Boerckel	2/15/2011	T. KOONTZ	B. MADDUX
0	ISSUED FOR FABRICATION	S. Boerckel	1/26/2011	T. KOONTZ	B. MADDUX
REV	DESCRIPTION	AUTHOR	DATE	CHECKED B	QA/QC

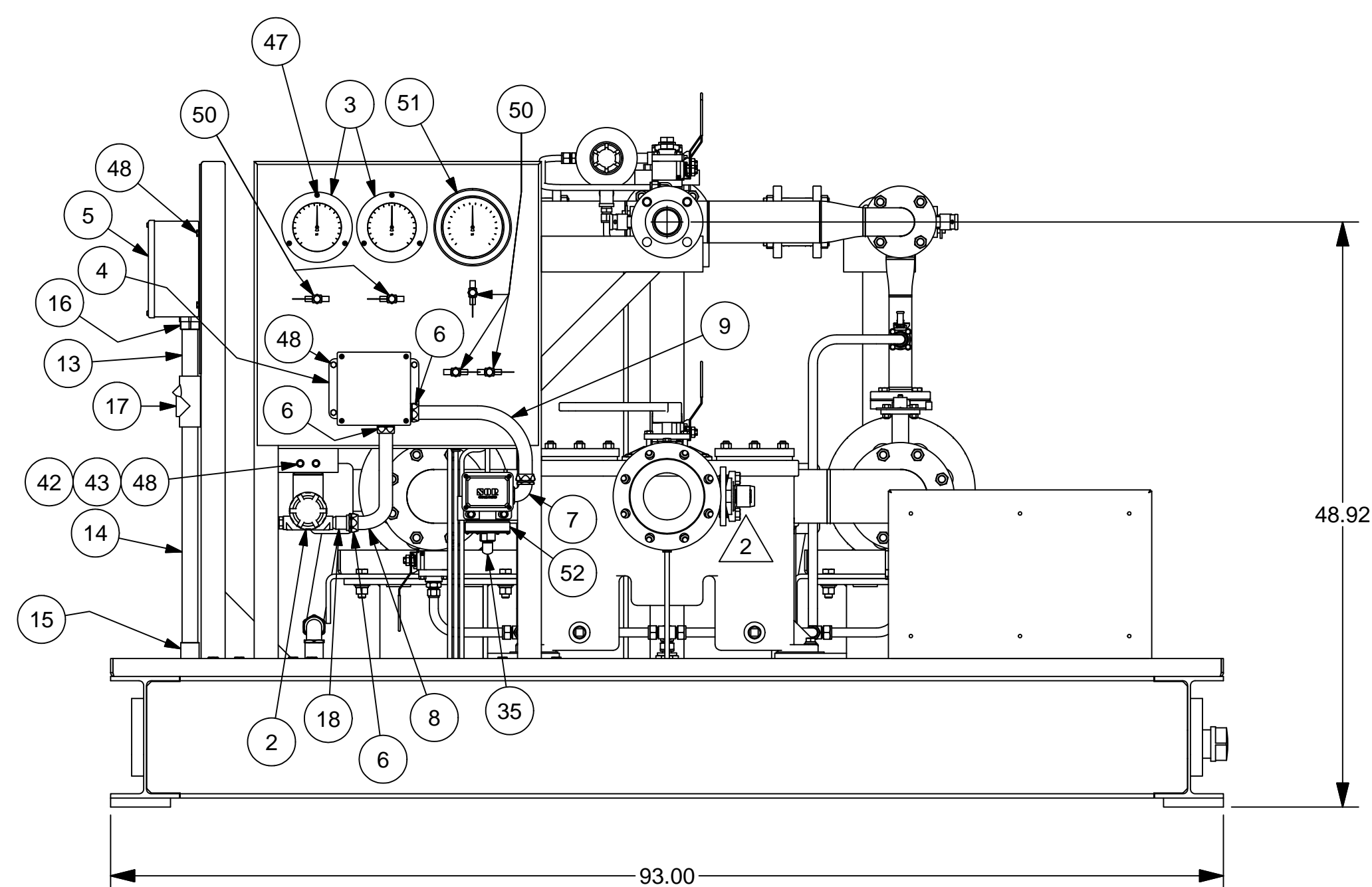
REVISION HISTORY

© COPYRIGHT, 2009, PRO STEEL  
MANUFACTURING ALL RIGHTS RESERVED.  
THIS DRAWING IS THE PROPRIETARY  
AND/OR CONFIDENTIAL PROPERTY OF  
PRO STEEL MANUFACTURING AND IS  
LOANED IN STRICT CONFIDENCE WITH  
THE UNDERSTANDING THAT IT  
WILL NOT BE REPRODUCED NOR USED  
FOR ANY PURPOSE EXCEPT THAT FOR WHICH  
IT IS LOANED. IT SHALL BE IMMEDIATELY  
RETURNED ON DEMAND, AND IS SUBJECT TO  
ALL OTHER TERMS AND CONDITIONS OF ANY  
WRITTEN AGREEMENT OR PURCHASE ORDER WHICH  
INCORPORATES OR RELATES TO THIS DRAWING.

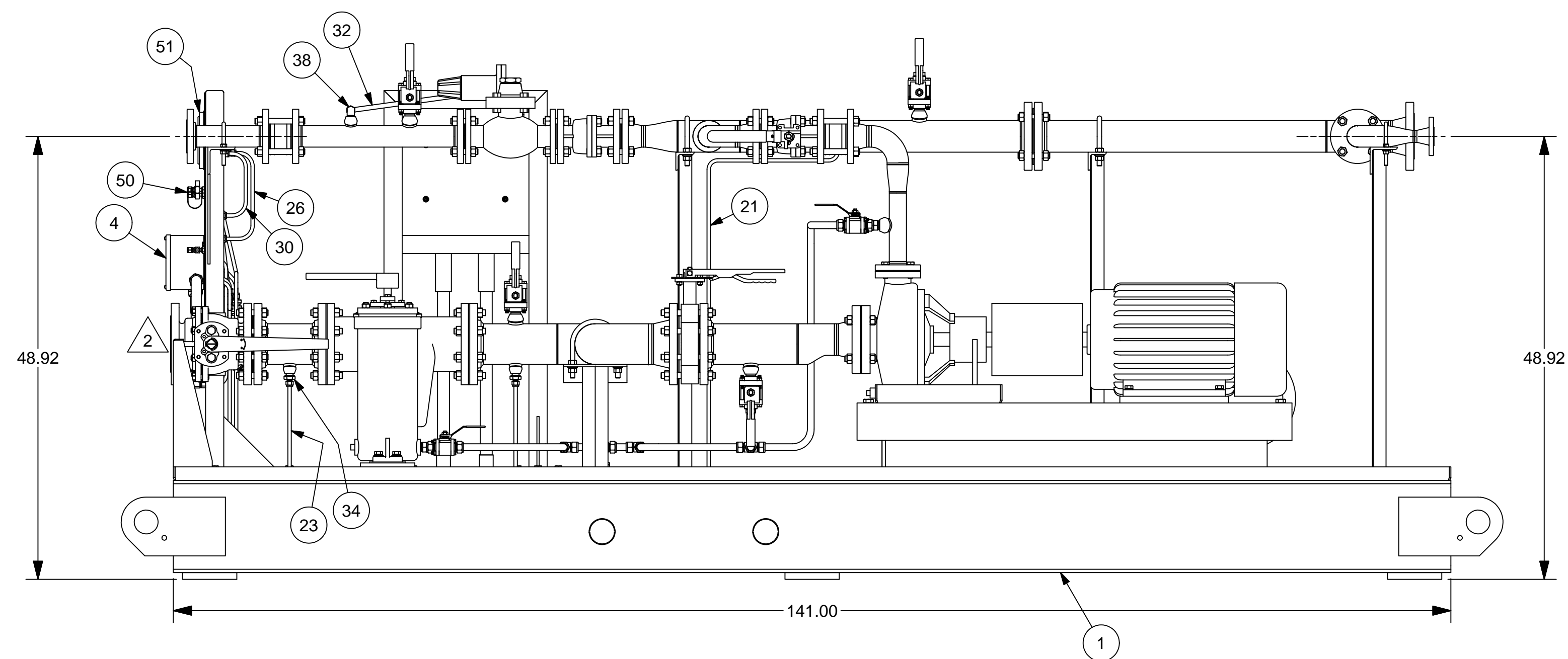
UNLESS OTHERWISE SPECIFIED	
DIMENSIONS ARE IN INCHES	
TOLERANCES ON	
DECIMALS	
X.X	± 0.10
X.XX	± 0.06
X.XXX	± 0.03
HOLE DIA	± 0.03
ANGLES	± 0.50°
SURFACE	✓ HFS-SF
SQUARENESS	± 0.06
DO NOT SCALE DRAWING	

DRAWN	S. Boerckel	1/26/2011
CHECKED	T. KOONTZ	2/3/2011
QA	B. MADDUX	2/3/2011
REVIEWER		
PROJECT NO		
409-2956-1		
CUSTOMER		
EDC - MARGARITA ISLAND		
JOB NO		

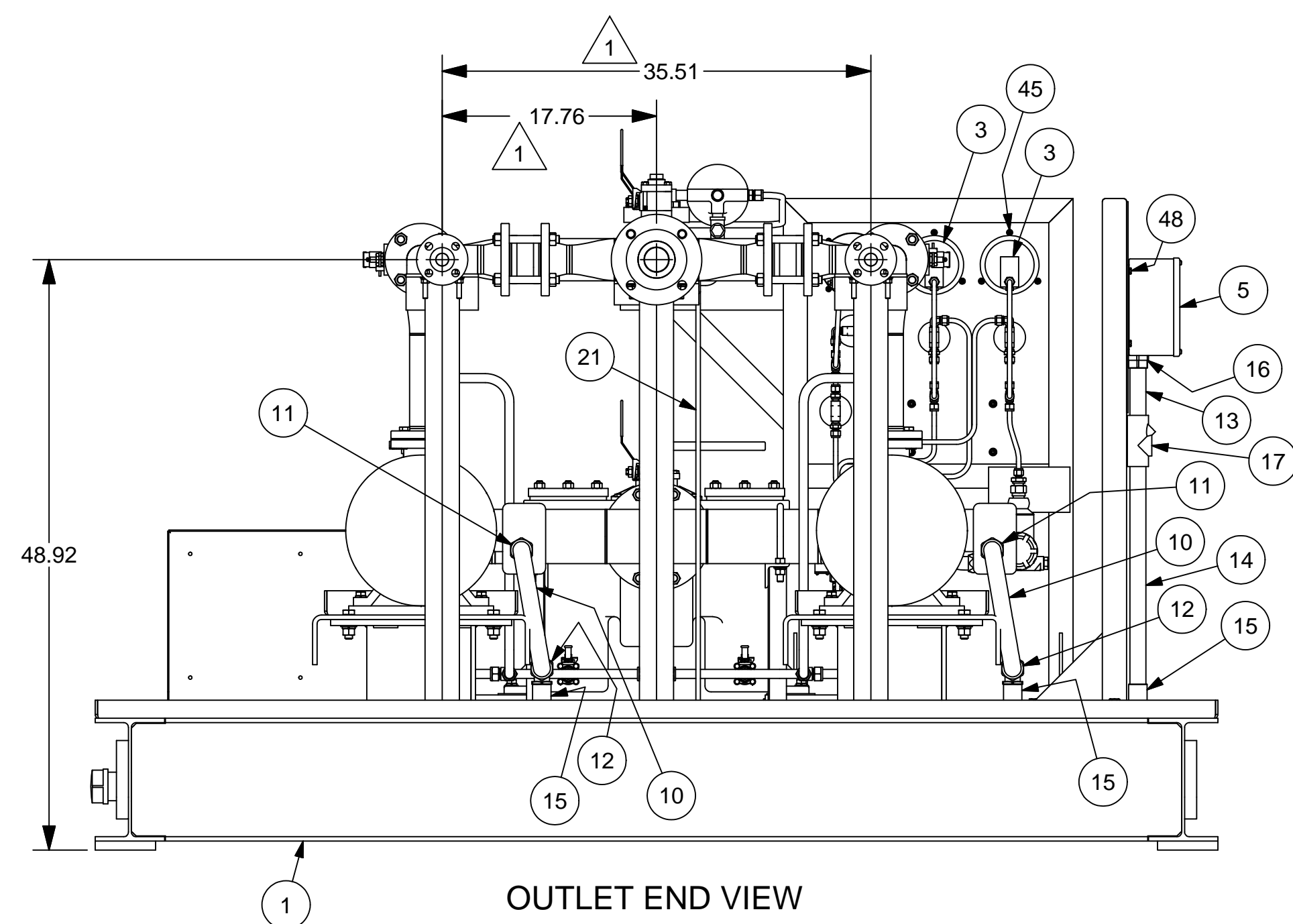
			
2011 ProEnergy Blvd SEDALIA, MISSOURI 65301 USA PHONE: 1-800-829-5150 FAX: 1-800-829-1160			
TITLE			
CONTROLS, INSTRUMENTAION & ELECTRICAL			
ARRANGEMENT			
LIQUID FUEL FORWARDING SKID - 7EA			
SIZE	ML:	DWG NO	REV
D		409-2956-LFF7EA-0000-2	2
SCALE: 1/8" = 1"		WEIGHT:	
		SHEET 2	



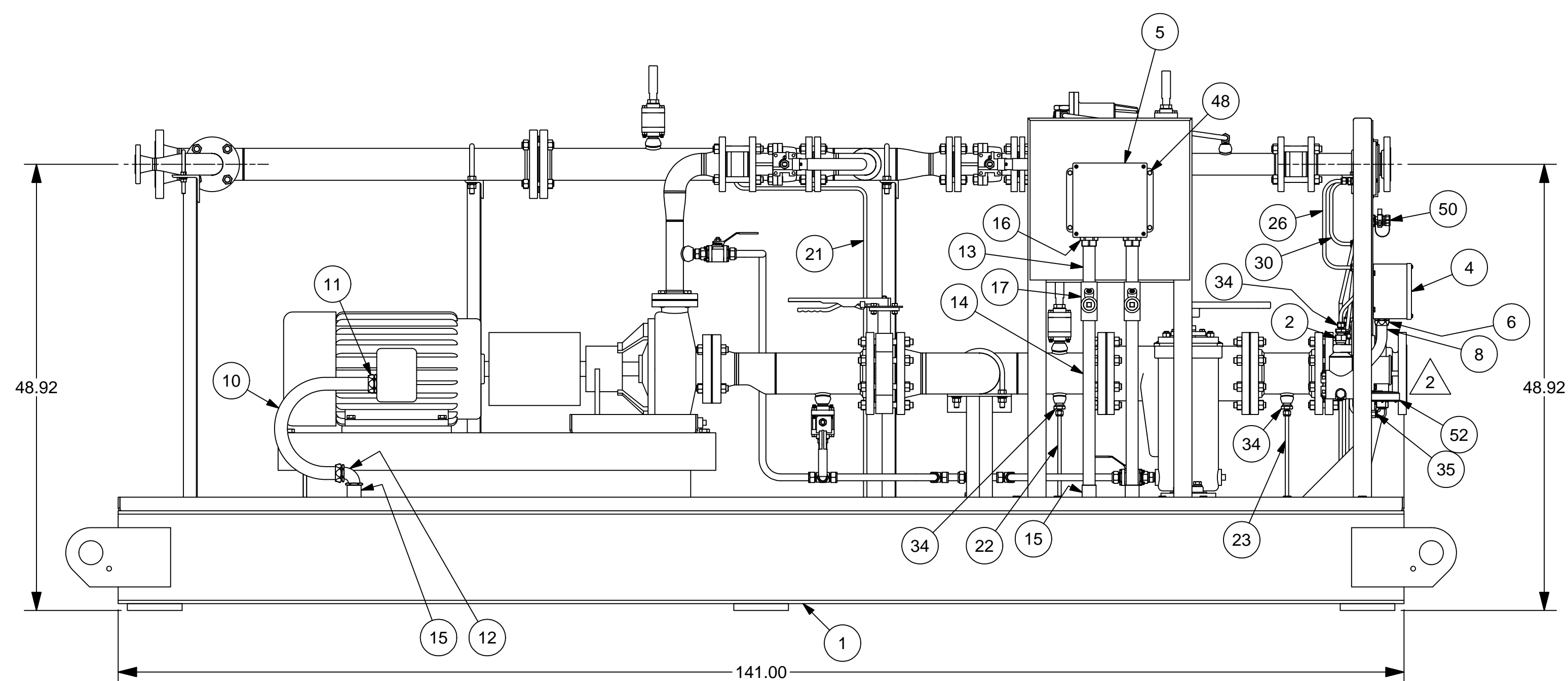
INLET END VIEW



FRONT VIEW



OUTLET END VIEW



BACK VIEW

2	CHG INLET BVF TO BV	S. Boerckel	2/25/2011	T. KOONTZ	B. MADDUX
1	CHG DISC PIPE 4" TO 3"	S. Boerckel	2/15/2011	T. KOONTZ	B. MADDUX
0	ISSUED FOR FABRICATION	S. Boerckel	1/27/2011	T. KOONTZ	B. MADDUX
REV	DESCRIPTION	AUTHOR	DATE	CHECKED B	QA/QC

## REVISION HISTORY

© COPYRIGHT, 2009, PRO STEEL  
MANUFACTURING ALL RIGHTS RESERVED.  
THIS DRAWING IS THE PROPRIETARY  
AND/OR CONFIDENTIAL PROPERTY OF  
PRO STEEL MANUFACTURING AND IS  
LOANED IN STRICT CONFIDENCE WITH  
THE UNDERSTANDING THAT IT  
WILL NOT BE REPRODUCED NOR USED  
FOR ANY PURPOSE EXCEPT THAT FOR WHICH  
IT IS LOANED. IT SHALL BE IMMEDIATELY  
RETURNED ON DEMAND, AND IS SUBJECT TO  
ALL OTHER TERMS AND CONDITIONS OF ANY  
WRITTEN AGREEMENT OR PURCHASE ORDER WHICH  
INCORPORATES OR RELATES TO THIS DRAWING.

UNLESS OTHERWISE SPECIFIED	
DIMENSIONS ARE IN INCHES	
TOLERANCES ON	
DECIMALS	
X.X	± 0.10
X.XX	± 0.06
X.XXX	± 0.03
HOLE DIA	± 0.03
ANGLES	± 0.50°
SURFACE	√ <u>HFS-SF</u>
SQUARENESS	± 0.06
DO NOT SCALE DRAWING	

DRAWN S. Boerckel	1/26/2011
CHECKED T. KOONTZ	2/3/2011
QA B. MADDUX	2/3/2011
REVIEWER	
PROJECT NO 409-2956-1	
CUSTOMER EDC - MARGARITA ISLAND	
IOR NO	



2201 ProEnergy Blvd  
SEDALIA, MISSOURI 65301 U  
PHONE: 1-660-829-5100  
FAX: 1-660-829-1160

TITLE	CONTROLS, INSTRUMENTAION & ELECTRICAL ARRANGEMENT
	LIQUID FUEL FORWARDING SKID - 7EA

SIZE	ML:	DWG NO	R
D		409-2956-LFF7EA-0000-3	
SCALE: 2/32"=1"		WEIGHT:	

